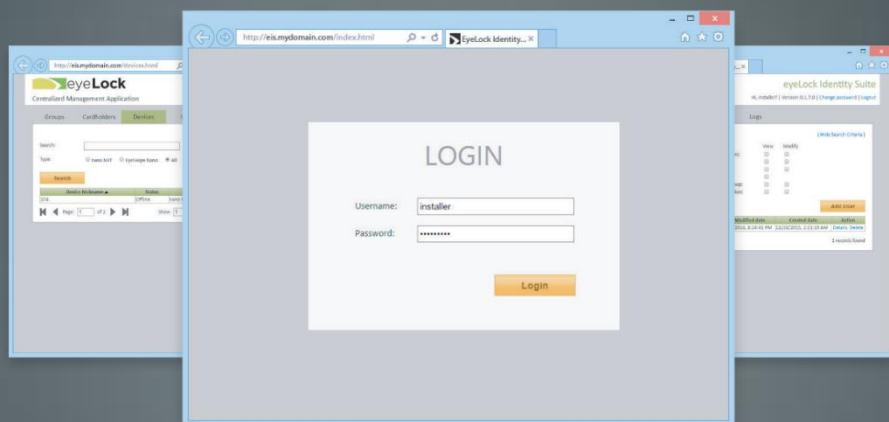


EyeLock Identity Suite (EIS)

Biometric identity management platform supporting EyeLock devices.



HIGH SECURITY MADE SIMPLE

EyeLock Identity Suite (EIS) is an identity management software server platform designed to manage and monitor EyeLock iris recognition devices. It performs the following functions:

- ✓ **Database synchronization across multiple EyeLock devices.** EyeLock devices are interoperable. Number of supported devices is practically unlimited.
- ✓ **Biometric matching.** If the database size exceeds the device capacity, typically 20,000 users, or in some other circumstances, the biometric matching can be performed with the EIS server Network Matcher component. The Network Matcher is also used to perform verification checks during user enrollment to ensure that each user is enrolled only once.
- ✓ **Synchronization of device configuration settings.** Connected devices may be split into groups, each with different settings.
- ✓ **Distributing device firmware updates.**
- ✓ **System event logging.**
- ✓ **Backend of logical access.** EIS can serve as a biometric identity provider in logical access systems.
- ✓ **Physical and logic access control within the same biometric system.** EIS allows operating systems where some selected devices are used for physical facility access while other devices provide logical (login) access to computing devices of the same network.
- ✓ **Enrolling user's biometrics.** EIS drives the enrollment process via connected devices and associates the biometric template with a cardholder record.
- ✓ **Off-the-shelf integration with most common brands of Access Control Systems (ACS).** Certain ACS brands support biometric enrollment directly via the ACS application.
- ✓ **Integration with other 3rd party systems.** The public API of EIS is available and provided as part of the standard EIS installation package.
- ✓ **Active Directory integration** is used to authenticate EIS operators and for internal authentication of communication between EIS components.
- ✓ **Elementary Access Control System.** When installed standalone, EIS provides basic ACS functionality including cardholder groups and door access operations.
- ✓ **Support of multiple standard and custom physical access card formats.** EIS supports most common card formats and allows configuring custom card types. EIS also supports multiple card formats within the same system.

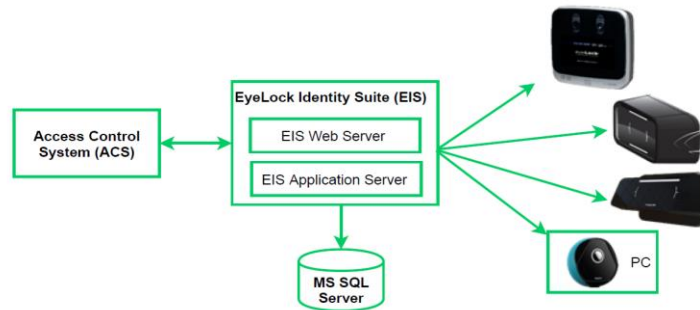
HARDWARE REQUIREMENTS

EyeLock Identity Suite (EIS) is a Windows application with a browser-based access to its Web Server component. The data persists in Microsoft SQL database. Small and development systems can be installed on Windows 10 Pro computers.

SERVER	OS	SOFTWARE
Web Server	Windows Server 2012 x64 Windows Server 2012 R2 x64 Windows Server 2016 x64 Windows Server 2019 x64	IIS 6.x-7.x .NET Framework 4.8
Application Server	Windows Server 2012 x64 Windows Server 2012 R2 x64 Windows Server 2016 x64 Windows Server 2019 x64	.NET Framework 4.8
Database Server	Windows Server 2012 x64 Windows Server 2012 R2 x64 Windows Server 2016 x64 Windows Server 2019 x64	Microsoft SQL Server 2012 R2 Microsoft SQL Server 2014 Microsoft SQL Server 2016 Microsoft SQL Server 2017 Microsoft SQL Server 2019

ACCESS CONTROL INTEGRATIONS

EyeLock Identity Suite (EIS) can operate stand-alone or integrated with existing Access Control Systems. Existing off-the-shelf integrations are listed in the table. The integration includes cardholder synchronization. For the integrations labeled with “*”, the biometric enrollment can be performed directly within the access control system user interface.



ACCESS CONTROL SYSTEM	VERSIONS
LENEL S2	OnGuard 7.5 (DataConduIT) OnGuard 7.6 and 8.0 (OpenAccess)
* SOFTWARE HOUSE	C-CURE 9000 2.60 C-CURE 9000 2.90 and 2.90 Enterprise
* Genetec	GSC 5.6 GSC 5.9
* PACOM	GMS 4.20
Honeywell	Pro-Watch 4.5
AMAG TECHNOLOGY	Symmetry 8.0 Symmetry 9.3 and 9.3 HSE
OPEN OPTIONS[®] ACCESS TECHNOLOGY	DNA Fusion 7.0.2.24
RS	Access It! 7.0
AVIGILON[™]	ACM 5.12.0 ACM 6
PSIA	PSIA PLAI 3.1